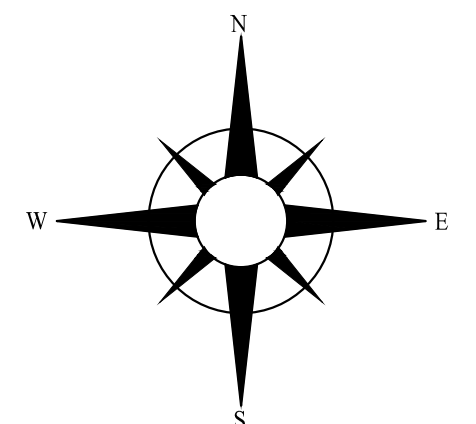


1	2	3	4	5	6	7	8	9
10	11	12	13	14	15	16	17	18
19	20	21	22	23	24	25	26	27
28	29	30	31	32	33	34	35	36

IO MAP KEY

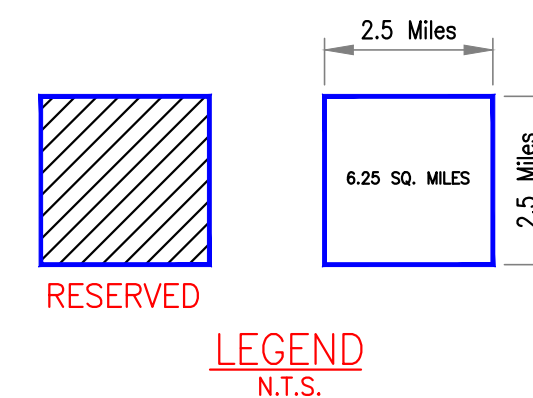


## UNIVERSAL MINERALS LEASES REGISTRY

Universal Mineral Leases Registry and NxGen USA Corp.  
 in partnership with Universal Mineral Leases Registry and NxGen USA Corp.  
 © 1969-2014 All rights reserved  
 Universal Mineral Leases Registry (PAT. Pending)

### UMLR DISCLAIMER:

UMLR makes every effort to produce and publish the most current and accurate information possible. No warranties, expressed or implied, are provided for the data herein, its use, or its interpretation. The assigned lots are subject to change before being finalized and final borders are dependent on an actual physical survey. The Assessor parcel maps are for assessment use only and do NOT represent a survey. The assessor parcel maps are compiled from official maps, photos and records courtesy of NASA, USGS and other organizations. These parcel maps are based on best data available and will be updated as needed. Final claim of these lots will depend on physical occupancy when available and will be updated as needed. Final claim of these lots will depend on physical occupancy when available. UMLR and it's partners are not liable for any claims made by other potential occupants of mapped areas.



IO  
 SUB-TITLE  
 SUB-TITLE  
 SOL05A-08-0101-000000

